

NAV_IL2 version1.3

Navigation Tool for IL2

By John'Mad'Doe

03/2008

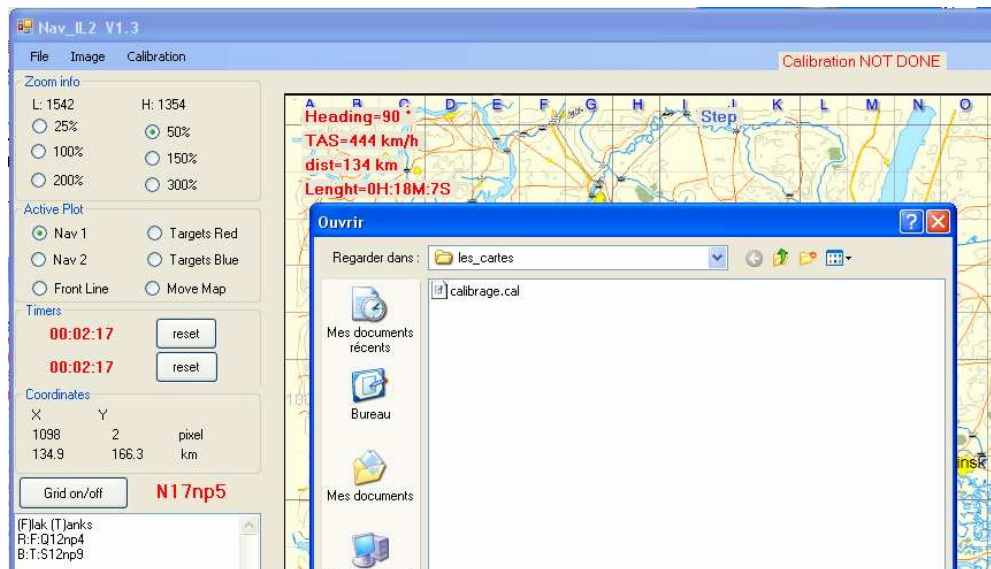
Needed: **Microsoft .NET Framework 3**

☒ Start

File > Load Map Select a file containing a map (*. bmp, jpg, jpeg, gif, tif)

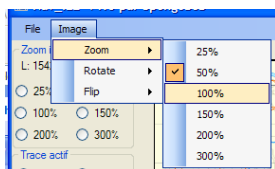
Then select the file containing calibration data. (*.cal)

If such a file doesn't exist, the program will create one when you calibrate your map



☒ Zoom Level, from 25 % to 300 %

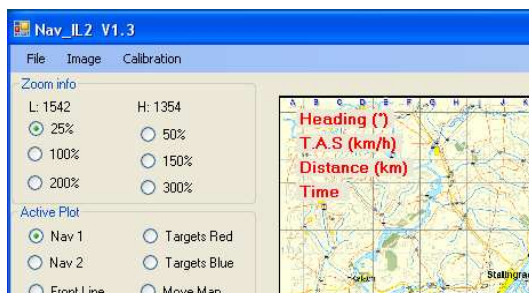
Zoom level is set automatically when loading the map.



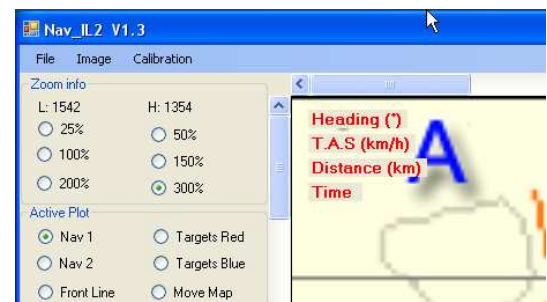
You can change zoom level by Image > Zoom



Or directly with the radio buttons



Zoom 25%



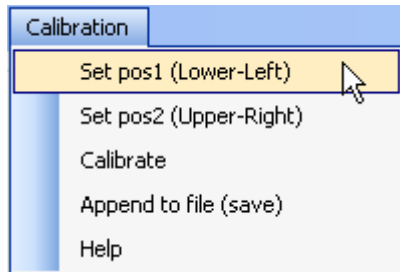
Zoom 300%

☒ Calibration :

If calibration data has not been found in the file, you will see:

Calibration NOT DONE

To calibrate the map:

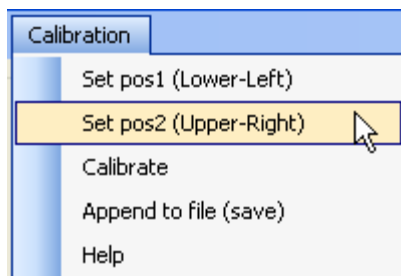


Indicate point 1
on the map



Key in the X & Y position in kilometers (km)

calibration		pixel	km
Point LL	X	78	10
	Y	1274	10
Point UR	X		
	Y		

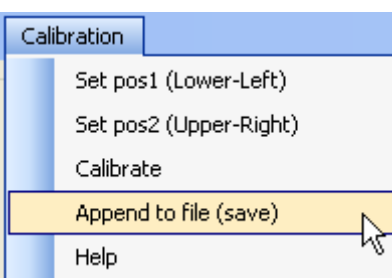
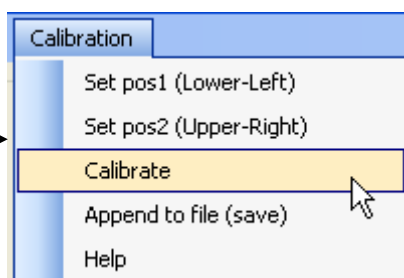


Indicate point 2
on the map



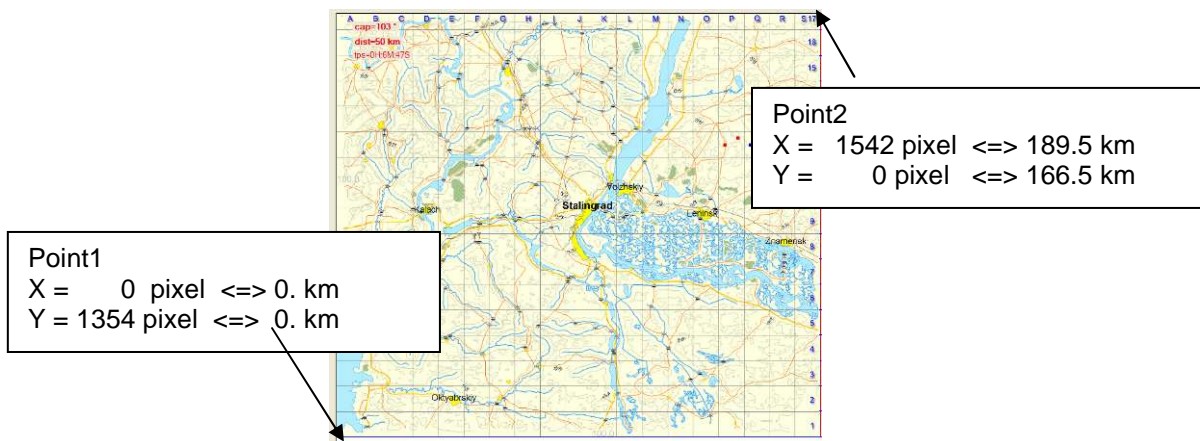
Key in the X & Y position in kilometers (km)

calibration		pixel	km
Point LL	X	78	10
	Y	1274	10
Point UR	X	1464	180
	Y	52	160



Calibration DONE

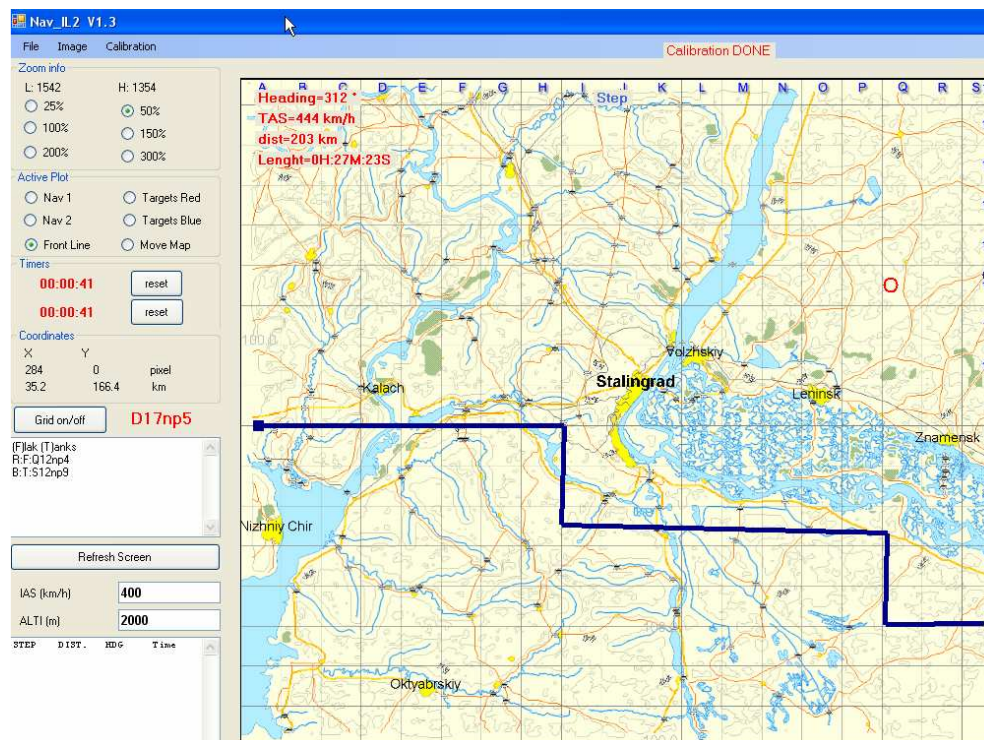
Exemple



☒ To draw the front line:

Click on the button « Front »

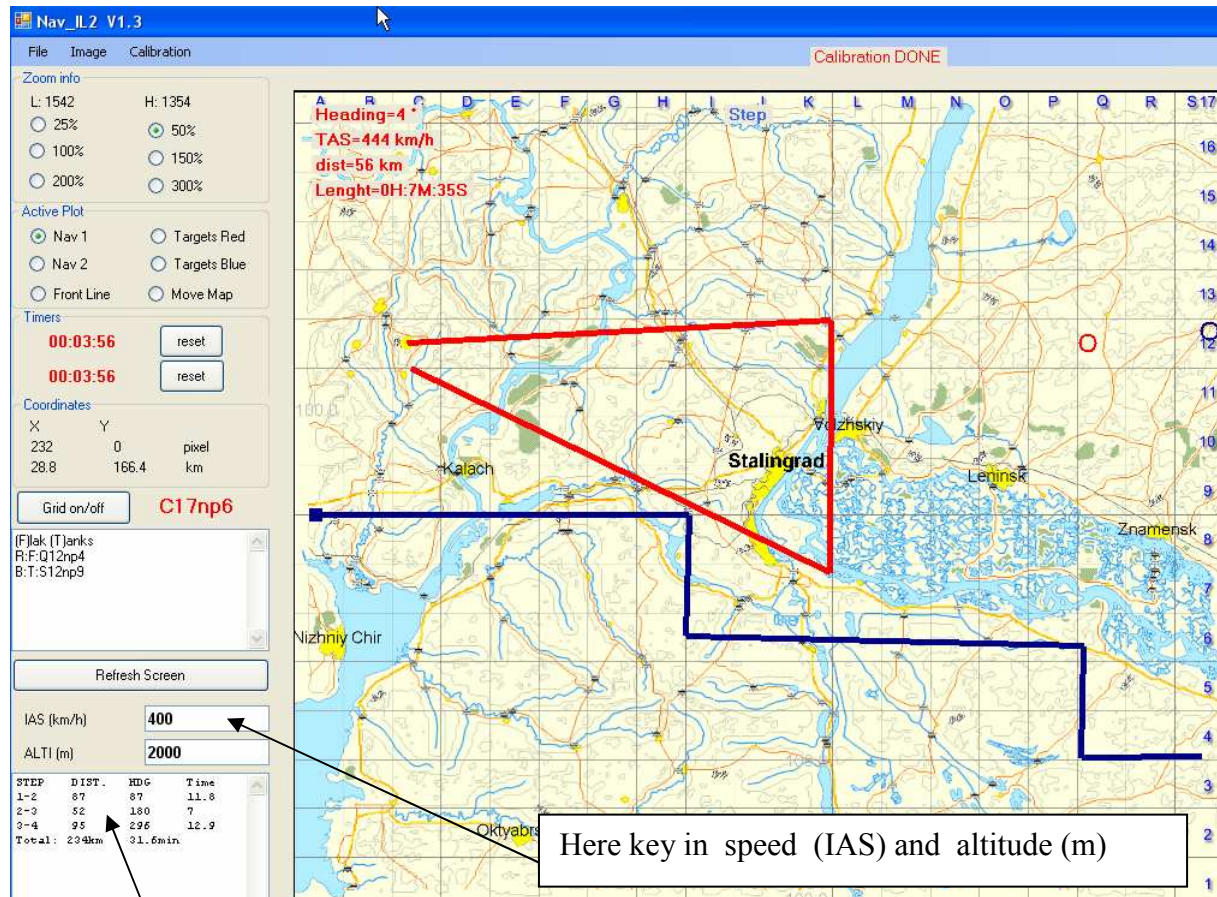
- Left mouse button: Add a waypoint
- Right mouse button: Remove the last waypoint



☒ To draw a navigation

Click on the button « Nav1 »

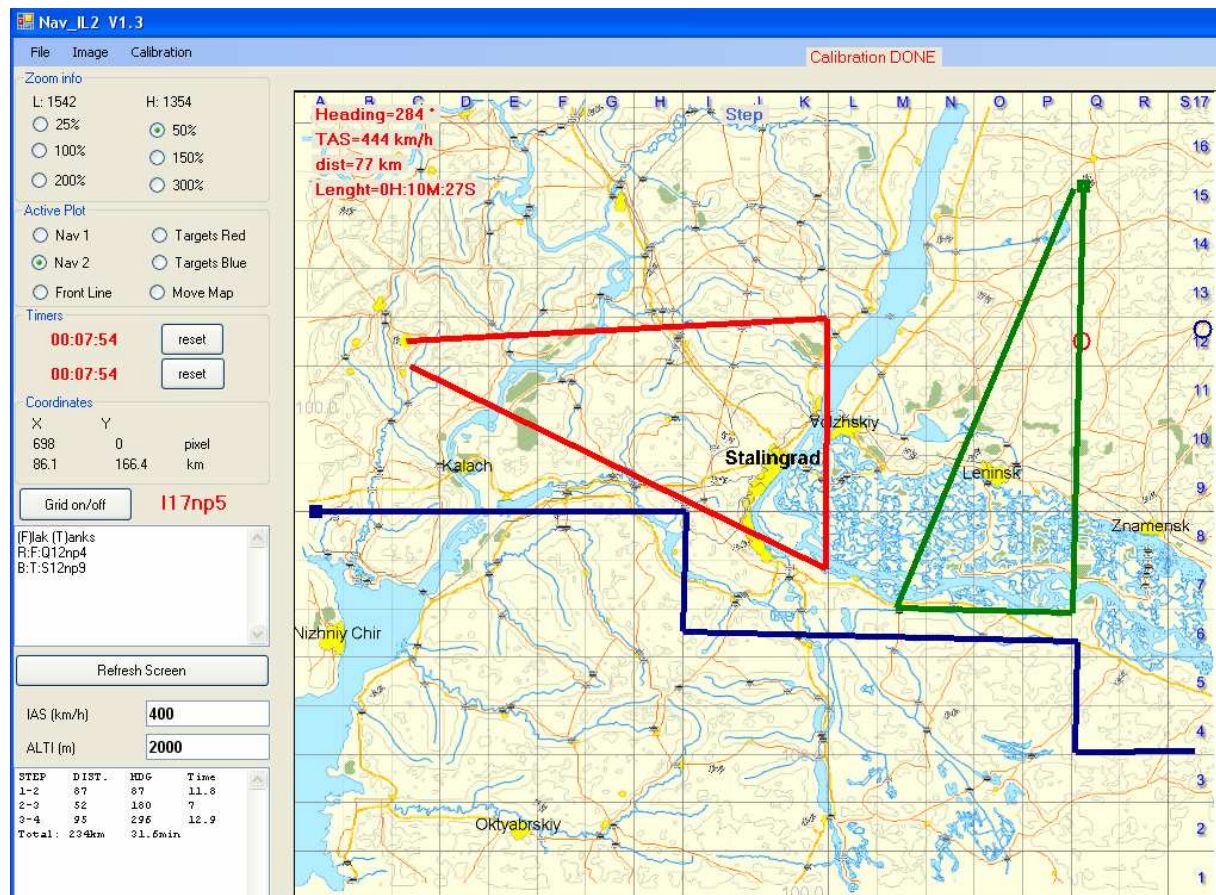
- Left mouse button: Add a waypoint
- Right mouse button: Remove the last waypoint



To draw a secondary navigation

Click on the button « Nav2 »

- Left mouse button: Add a waypoint
- Right mouse button: Remove the last waypoint



☒ Plot location of targets, first way:

There is an area to enter the location of the Red or Blue targets.
Enter the position in IL2's format

Side (R ou B) + Type (F or T) + Map square + Numpad

Respect the following le format:

R:F:F8np1 Red Target "Flak" in F8 numpad 4
B:T:B6np7 Blue Target " Tank" in B6 numpad 7

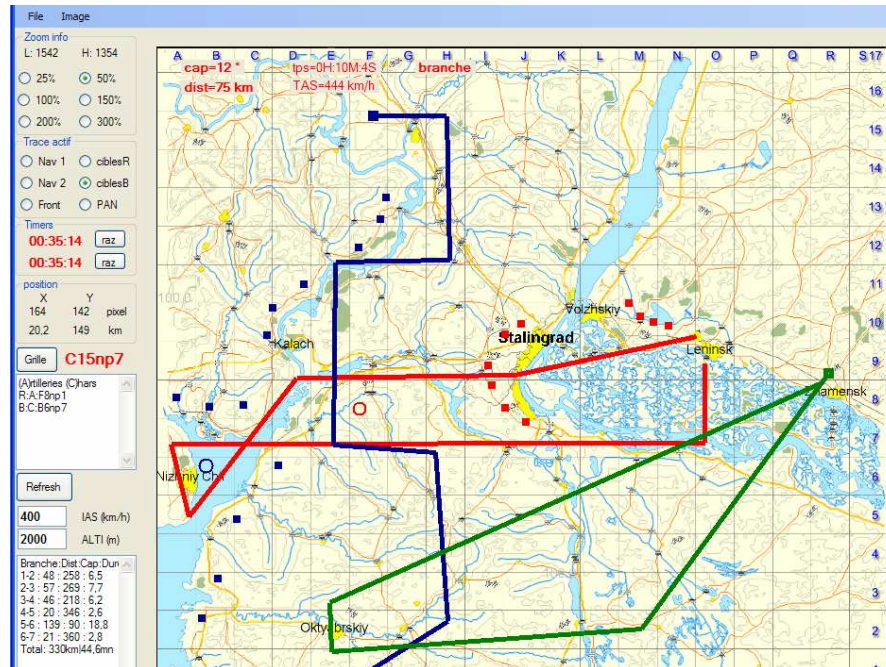
Click the Refresh button to update the screen



☒ Plot location of targets, second way :

Click the button «Red Target» or «Blue Target»

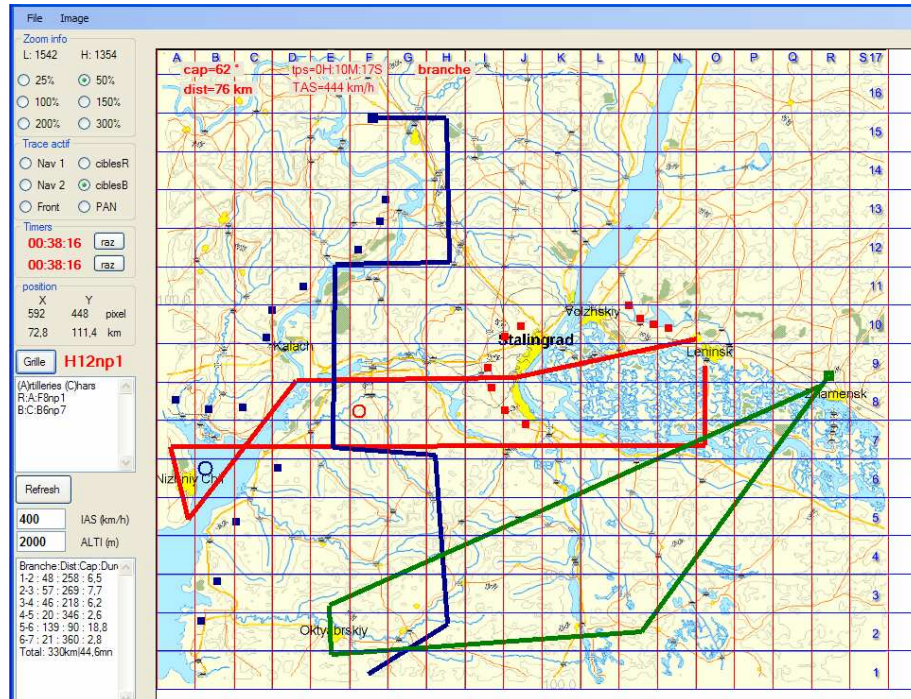
- Left mouse button: Add a point
- Right mouse button: Remove the last point created



Draw a grid

Useful for map without a grid

Click the button « Grid »



To scroll the map

When the zoom level allows it , it is possible to move the map

- First way: use the horizontal of vertical scrollbars
- Second way: click the button « Move Map » and scroll with the mouse

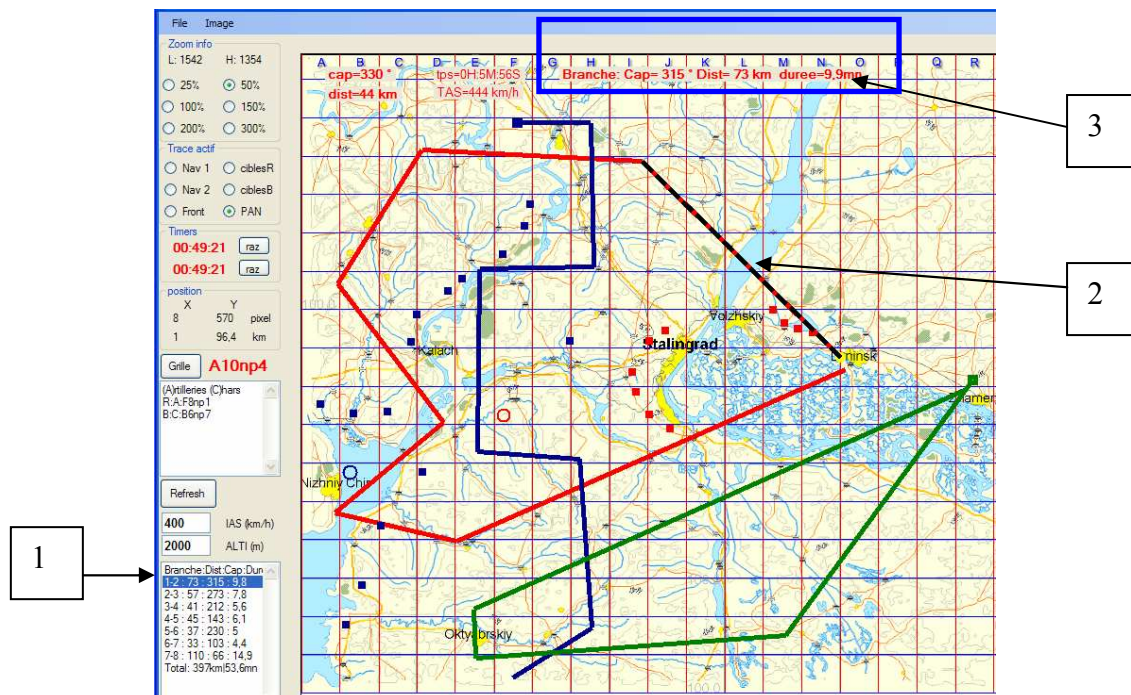
Navigation

First, there are two independent timers that can be reset at any time

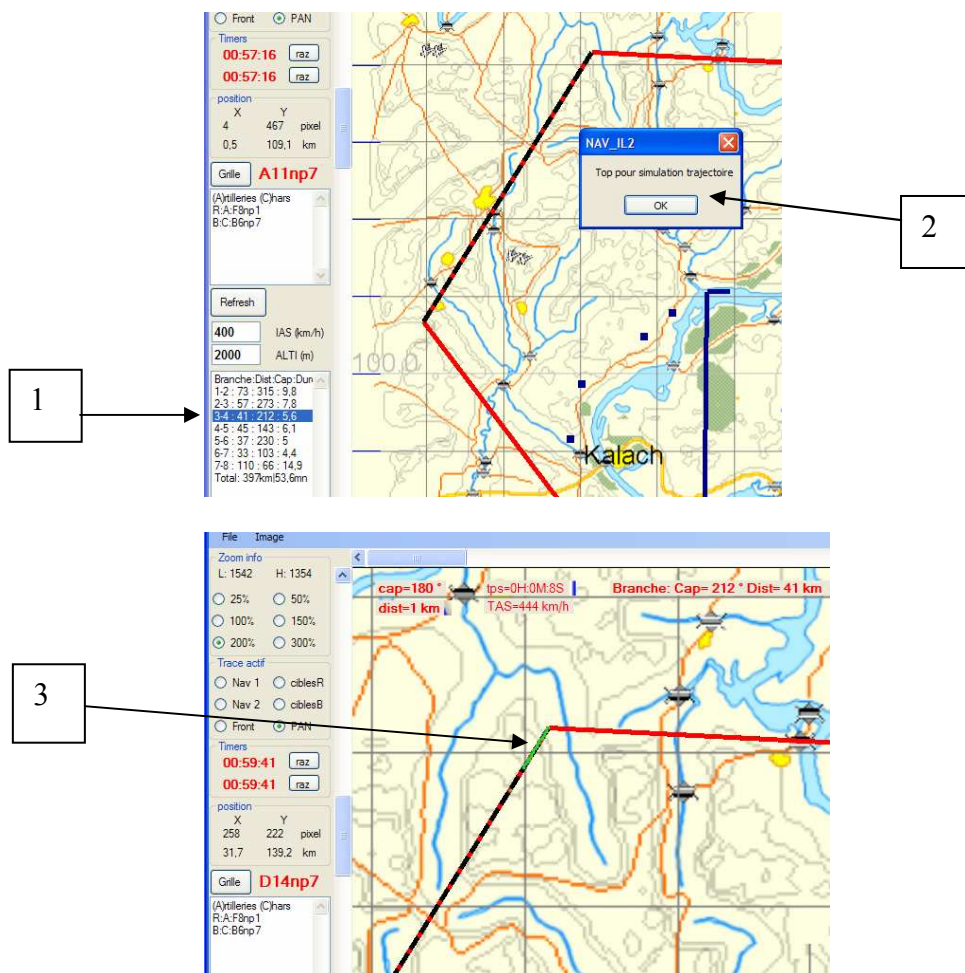
Then there is an area providing information for each leg of the main navigation: heading, distance, estimated time.

The last line gives the total distance and total time.

In this list, if you click on a leg, it will appear dotted on the map and related information will appear at the top of the map.



Finally, if you click again at the same place in the list, it triggers a plot dotted green that simulates the position of the aircraft, from 1 waypoint of the leg, in the direction of the second waypoint.



☑ Heading and distance between two 2 positions:

After clicking on the map (preferably in "Move Map" mode to avoid creating new waypoints or targets), when you move the mouse, the program displays permanently distance and direction between the clicked point and the mouse location.

Saving and loading a navigation

File > Save Nav

File > Load Nav